

# ETNASTONE

## TABLES

Etnastone tables can be entirely customized in different types of lavastone finishes.

### TABLETOP FINISH

The process of glass fusion, used to obtain the highly resistant coloured surface, is an original technique from the Mount Etna region, in Sicily.

The unique composition of Etna's lavastone sometimes includes components that may react during the fusion at 900 degrees which can lead to variations in shade, colour and unexpected surface depressions.

These unpredictable reactions and transformations are to be considered as integral to the preciousness and originality of each piece.

Variations and irregularities are less visible on darker colours.

### LEG FINISH

Legs can be customized in several different finishes: Natural, Chiseled, Blackened and Colored.

### MATERIAL

Lavastone

### PLACE OF PRODUCTION

Sicily, Italy

BABLED DESIGN STUDIO ©

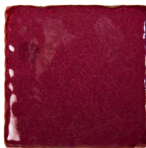
[www.babled.net](http://www.babled.net)

[info@babled.net](mailto:info@babled.net)

### TABLETOP FINISH



Chilly Red 40



Dark Magenta 24



Vintage Rose 27



Pale Rose 15



Rose 26



Lavander 42



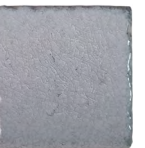
Stone 29



Sand 37



Wolf Grey 30



Shark Grey 34



Rusty Red 06



Cinnamon 35



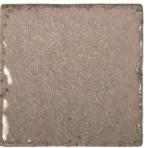
Curry 36



Curcuma 18



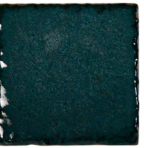
Ginger 11



Desert 38



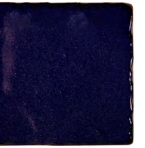
Warm Grey 01



Seaweed 32



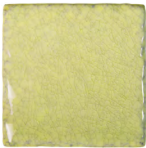
Petrol 23



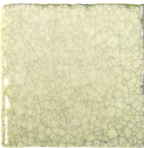
Cobalt 09



Lemon 13



Light Lime 39



Vanilla 16



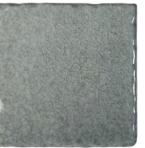
White 19



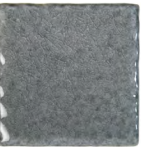
Seashell 02



Ice Grey 05



Light Granit 20



Granit 41



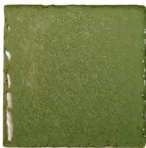
Ocean 44



Ocean Green 33



Lime 03



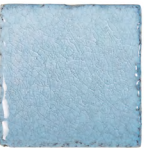
Jade 08



Wasabi 17



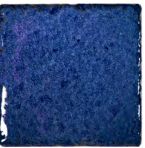
Ice White 46



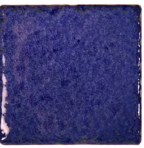
Skyblue 14



Turquoise 07



Mediterranean Blue 45



Light Sapphire 10



Black 21

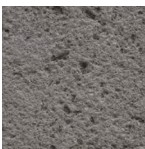


Natural Finish  
High Gloss



Natural Finish  
Low Gloss

### LEG FINISH



Natural Finish



Chiseled Finish



Blackened Finish



Rusty Red 06



Cinnamon 35



Light Lime 39



Pale Rose 15



Lavander 42



Turquoise 07



Petrol 23



Jade 08



White 19



# ETNASTONE

## TABLES

---

Etnastone tables can be entirely customized in different types of lavastone finishes.

### TABLETOP FINISH

The process of glass fusion, used to obtain the highly resistant coloured surface, is an original technique from the Mount Etna region, in Sicily.

The unique composition of Etna's lavastone sometimes includes components that may react during the fusion at 900 degrees which can lead to variations in shade, colour and unexpected surface depressions.

These unpredictable reactions and transformations are to be considered as integral to the preciousness and originality of each piece.

Variations and irregularities are less visible on darker colours.

### LEG FINISH

Legs can be customized in several different finishes: Natural, Chiseled, Blackened and Colored.

### MATERIAL

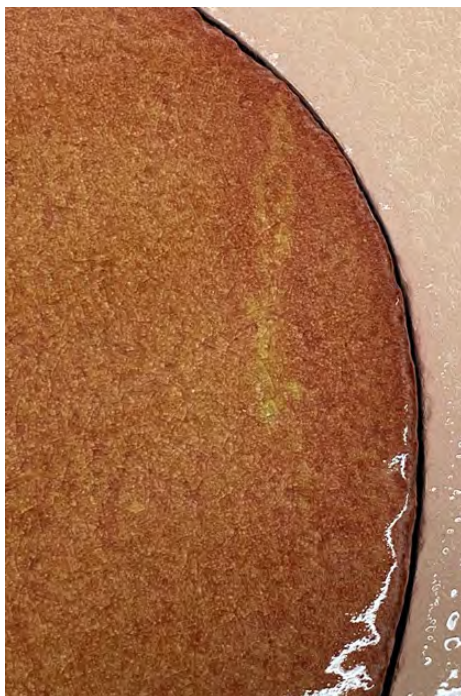
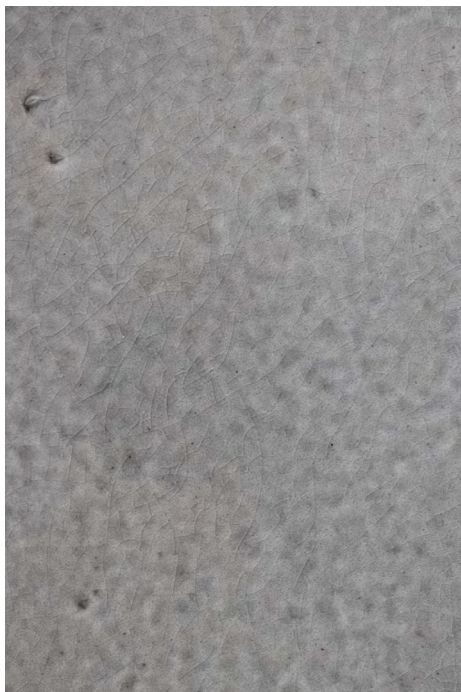
Lavastone

### PLACE OF PRODUCTION

Sicily, Italy

---

BABLED DESIGN STUDIO ©  
[www.babled.net](http://www.babled.net)  
[info@babled.net](mailto:info@babled.net)





# ETNASTONE

## TABLES

---

Etnastone tables can be entirely customized in different types of lavastone finishes.

### TABLETOP FINISH

The process of glass fusion, used to obtain the highly resistant coloured surface, is an original technique from the Mount Etna region, in Sicily.

The unique composition of Etna's lavastone sometimes includes components that may react during the fusion at 900 degrees which can lead to variations in shade, colour and unexpected surface depressions.

These unpredictable reactions and transformations are to be considered as integral to the preciousness and originality of each piece.

Variations and irregularities are less visible on darker colours.

### LEG FINISH

Legs can be customized in several different finishes: Natural, Chiseled, Blackened and Colored.

### MATERIAL

Lavastone

### PLACE OF PRODUCTION

Sicily, Italy

---

BABLED DESIGN STUDIO ©  
[www.babled.net](http://www.babled.net)  
[info@babled.net](mailto:info@babled.net)

