

# ETNASTONE SIDE

## SIDE TABLES

Numbered Edition

### DIMENSIONS

Side Table A

H. 42 cm / 16.5 "

Side Table B

H. 50 cm / 19.6 "

Side Table C

H. 50 cm / 19.6 "

Weight: according to model

### MATERIAL

Lavastone

Etnastone tables can be entirely customized in different types of lavastone finishes.

See suggested samples [here](#).

### PLACE OF PRODUCTION

Sicily, Italy



*Etnastone Side Tables A  
with Chiseled Finish (Base)*

BABLED DESIGN STUDIO ©

[www.babled.net](http://www.babled.net)

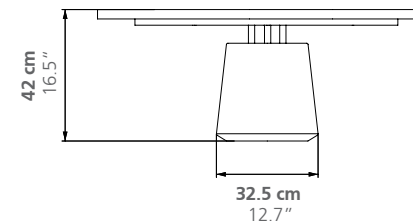
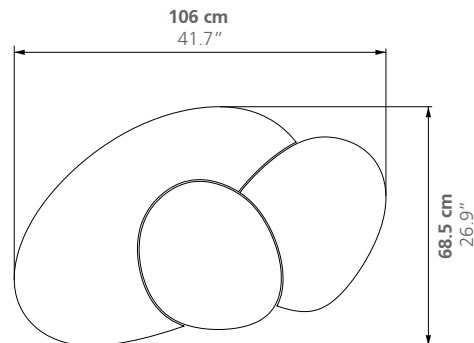
[info@babled.net](mailto:info@babled.net)

### SIDE TABLE A

Weight

Top: 45 kg

Base: 37 kg

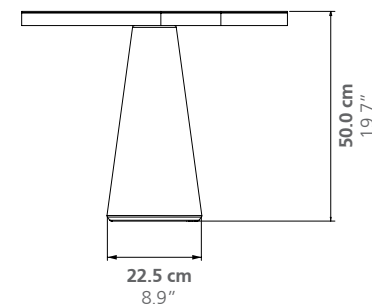
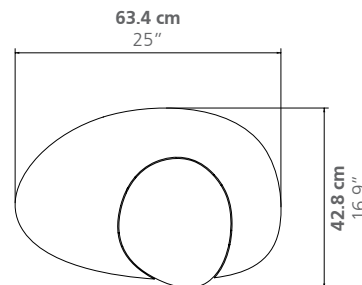


### SIDE TABLE B

Weight

Top: 16 kg

Base: 30 kg

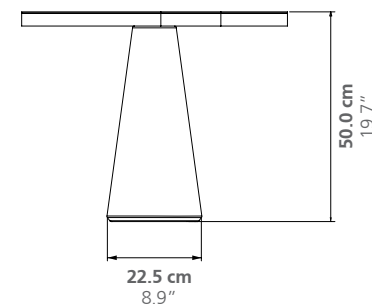
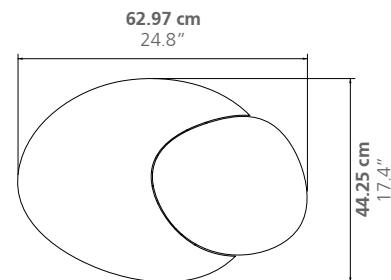


### SIDE TABLE C

Weight

Top: 17 kg

Base: 30 kg



# ETNASTONE

## TABLES

---

Etnastone tables can be entirely customized in different types of lavastone finishes.

### TABLETOP FINISH

The process of glass fusion, used to obtain the highly resistant coloured surface, is an original technique from the Mount Etna region, in Sicily.

The unique composition of Etna's lavastone sometimes includes components that may react during the fusion at 900 degrees which can lead to variations in shade, colour and unexpected surface depressions.

These unpredictable reactions and transformations are to be considered as integral to the preciousness and originality of each piece.

Variations and irregularities are less visible on darker colours.

### LEG FINISH

Legs can be customized in several different finishes: Natural, Chiseled, Blackened and Colored.

### MATERIAL

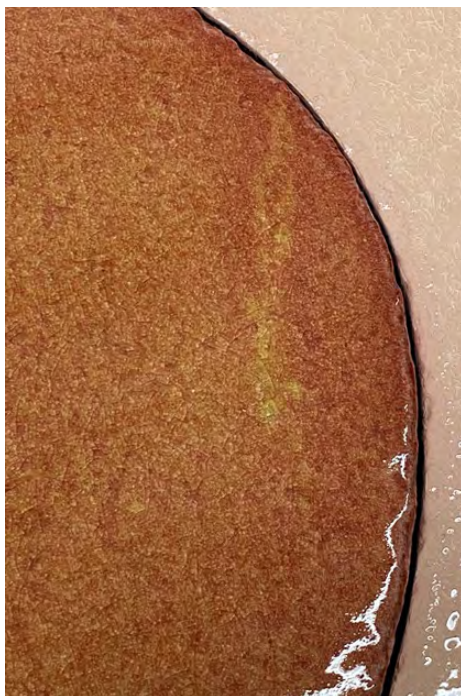
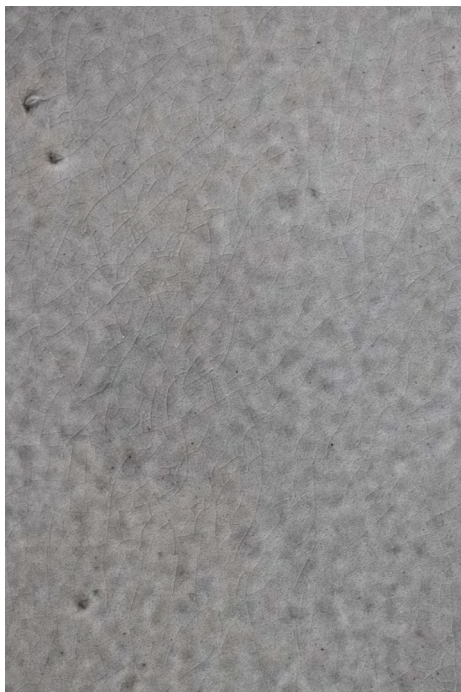
Lavastone

### PLACE OF PRODUCTION

Sicily, Italy

---

BABLED DESIGN STUDIO ©  
[www.babled.net](http://www.babled.net)  
[info@babled.net](mailto:info@babled.net)





# ETNASTONE

## TABLES

---

Etnastone tables can be entirely customized in different types of lavastone finishes.

### TABLETOP FINISH

The process of glass fusion, used to obtain the highly resistant coloured surface, is an original technique from the Mount Etna region, in Sicily.

The unique composition of Etna's lavastone sometimes includes components that may react during the fusion at 900 degrees which can lead to variations in shade, colour and unexpected surface depressions.

These unpredictable reactions and transformations are to be considered as integral to the preciousness and originality of each piece.

Variations and irregularities are less visible on darker colours.

### LEG FINISH

Legs can be customized in several different finishes: Natural, Chiseled, Blackened and Colored.

### MATERIAL

Lavastone

### PLACE OF PRODUCTION

Sicily, Italy

---

BABLED DESIGN STUDIO ©  
[www.babled.net](http://www.babled.net)  
[info@babled.net](mailto:info@babled.net)

