

ETNASTONE DINING

DINING TABLES

Numbered Edition

DIMENSIONS

Dining Table Long

H. 73.3 cm / 28.9 "

Dining Table Long XL

H. 73.3 cm / 28.9 "

Round Dining Table

H. 73.3 cm / 28.9 "

Breakfast Table

H. 73 cm / 28.7 "

Breakfast Table XL

H. 73 cm / 28.7 "

Weight: according to model

MATERIAL

Lavastone

Etnastone tables can be entirely customized in different types of lavastone finishes.
See suggested samples [here](#).

PLACE OF PRODUCTION

Sicily, Italy



Etnastone Dining Table Long in Granit, Ocean, Ocean Green, Seashell (Top) and Blackened Finish (Base)

BABLED DESIGN STUDIO ©

www.babled.net

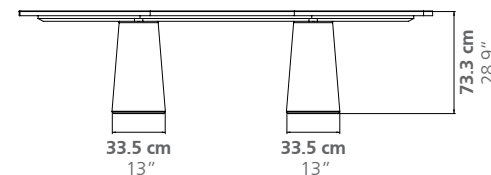
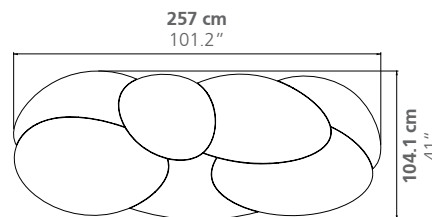
info@babled.net

DINING TABLE LONG

Weight

Top: 195 kg

Base: 173 kg

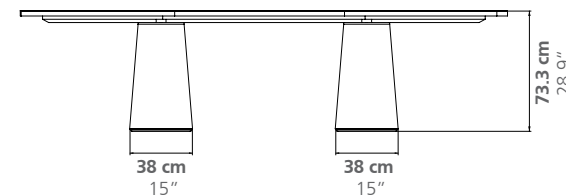
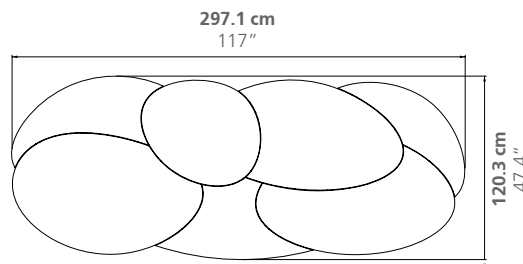


DINING TABLE LONG XL

Weight

Top: 260 kg

Base: 235 kg

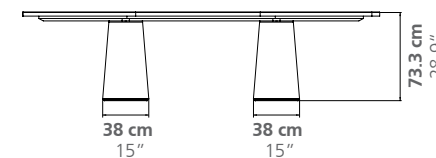
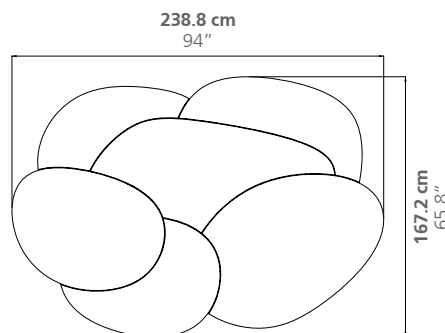


ROUND DINING TABLE

Weight

Top: 265 kg

Base: 231 kg



Breakfast Table models on next page ↓

ETNASTONE DINING

DINING TABLES

Numbered Edition

DIMENSIONS

Dining Table Long

H. 73.3 cm / 28.9 "

Dining Table Long XL

H. 73.3 cm / 28.9 "

Round Dining Table

H. 73.3 cm / 28.9 "

Breakfast Table

H. 73 cm / 28.7 "

Breakfast Table XL

H. 73 cm / 28.7 "

Weight: according to model

MATERIAL

Lavastone

Etnastone tables can be entirely customized in different types of lavastone finishes.
See suggested samples [here](#).

PLACE OF PRODUCTION

Sicily, Italy



*Etnastone Dining Table Long in
Granit, Ocean, Ocean Green, Seashell (Top)
and Blackened Finish (Base)*

BABLED DESIGN STUDIO ©

www.babled.net

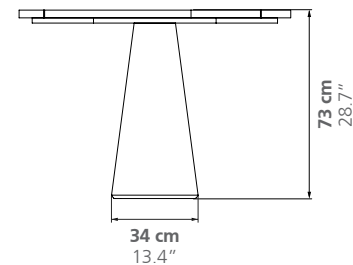
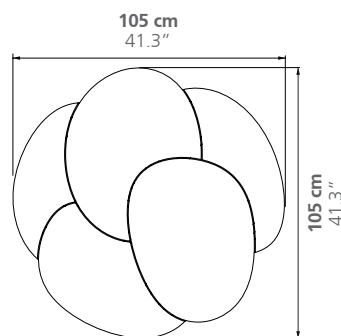
info@babled.net

BREAKFAST TABLE

Weight

Top: 75 kg

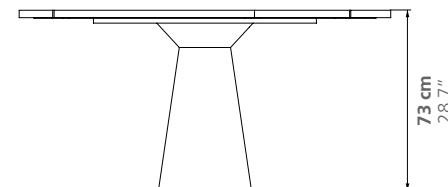
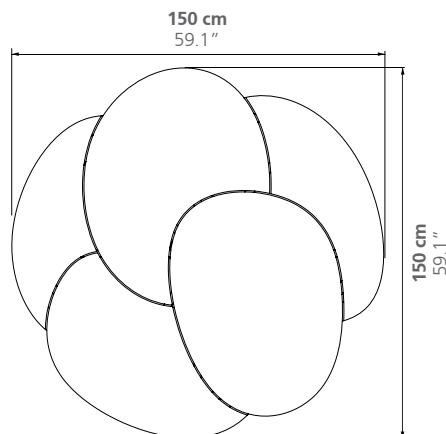
Base: 70 kg



BREAKFAST TABLE XL

Weight

Total: 250 kg



ETNASTONE

TABLES

Etnastone tables can be entirely customized in different types of lavastone finishes.

TABLETOP FINISH

The process of glass fusion, used to obtain the highly resistant coloured surface, is an original technique from the Mount Etna region, in Sicily.

The unique composition of Etna's lavastone sometimes includes components that may react during the fusion at 900 degrees which can lead to variations in shade, colour and unexpected surface depressions.

These unpredictable reactions and transformations are to be considered as integral to the preciousness and originality of each piece.

Variations and irregularities are less visible on darker colours.

LEG FINISH

Legs can be customized in several different finishes: Natural, Chiseled, Blackened and Colored.

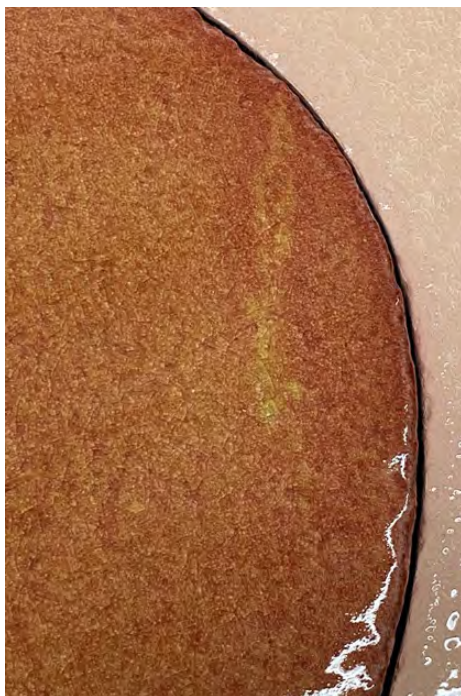
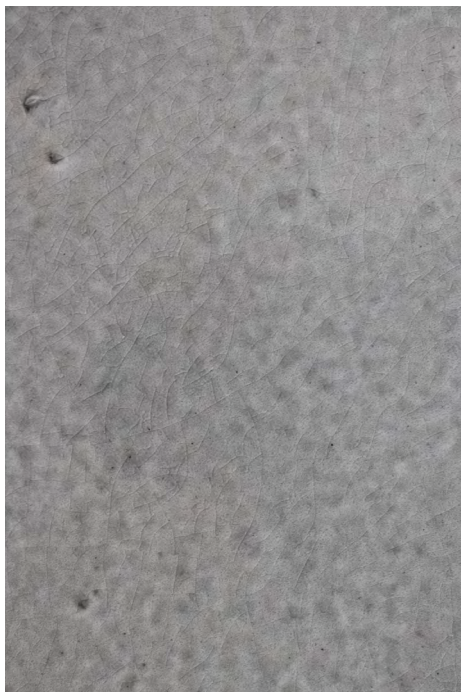
MATERIAL

Lavastone

PLACE OF PRODUCTION

Sicily, Italy

BABLED DESIGN STUDIO ©
www.babled.net
info@babled.net



ETNASTONE

TABLES

Etnastone tables can be entirely customized in different types of lavastone finishes.

TABLETOP FINISH

The process of glass fusion, used to obtain the highly resistant coloured surface, is an original technique from the Mount Etna region, in Sicily.

The unique composition of Etna's lavastone sometimes includes components that may react during the fusion at 900 degrees which can lead to variations in shade, colour and unexpected surface depressions.

These unpredictable reactions and transformations are to be considered as integral to the preciousness and originality of each piece.

Variations and irregularities are less visible on darker colours.

LEG FINISH

Legs can be customized in several different finishes: Natural, Chiseled, Blackened and Colored.

MATERIAL

Lavastone

PLACE OF PRODUCTION

Sicily, Italy

BABLED DESIGN STUDIO ©
www.babled.net
info@babled.net

