

AZOICI

VASES

Limited Edition / Unique pieces

DIMENSIONS

H. 42 cm x Ø 45 cm

MATERIAL

Murano hand blown glass

PLACE OF PRODUCTION

Murano, Italy

All of these pieces were hand blown by Master Andrea Zilio in Vetreria Anfora.



23/05/2019 (SOLD)

COLOR

Body: Warm Grey
Applications: Blue, Matte Black

TECHNIQUE

Band application



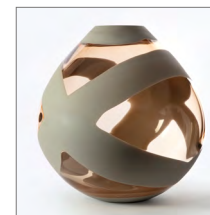
01/07/2019 (SOLD)

COLOR

Body: Emerald Green, Warm Grey
Applications: Matte Black

TECHNIQUE

Band application



08/09/2020

COLOR

Body: Rosé
Applications: Matte Warm Grey

TECHNIQUE

Band application



23/05/2019 (SOLD)

COLOR

Body: Warm Grey
Applications: Blue, Matte Black

TECHNIQUE

Band application



02/07/2019 (SOLD)

COLOR

Body: Light Bronze
Applications: Matte Warm Grey

TECHNIQUE

Band application



08/09/2020 (SOLD)

COLOR

Body: Topaz Orange
Applications: Matte Warm Grey

TECHNIQUE

Band application



24/05/2019 (SOLD)

COLOR

Body: Sapphire Blue
Applications: Matte Black,
Matte Blue

TECHNIQUE

Band application



02/07/2019 (SOLD)

COLOR

Body: Light Bronze
Applications: Matte Warm Grey

TECHNIQUE

Band application



08/09/2020 (SOLD)

COLOR

Body: Rosé
Applications: Matte Warm Grey

TECHNIQUE

Band application



26/05/2019

COLOR

Body: Warm Grey
Applications: Matte Black,
Matte Blue, Sapphire Blue

TECHNIQUE

Band application



02/07/2019 (SOLD)

COLOR

Body: Light Bronze
Applications: Matte Warm Grey

TECHNIQUE

Band application



09/09/2020 (SOLD)

COLOR

Body: Rosé
Applications: Matte Black,
Matte Warm Grey

TECHNIQUE

Ring and band application



27/05/2019

COLOR

Body: Warm Grey
Applications: Matte Black,
Sapphire Blue

TECHNIQUE

Ring and band application



02/07/2019 (SOLD)

COLOR

Body: Light Bronze
Applications: Matte Black, Matte
and Transparent Warm Grey

TECHNIQUE

Ring and band application



10/11/2020 (SOLD)

COLOR

Body: Bright Red
Applications: Matte Black

TECHNIQUE

Band application

AZOICI

VASES

Limited Edition / Unique pieces

DIMENSIONS

H. 42 cm x Ø 45 cm

MATERIAL

Murano hand blown glass

PLACE OF PRODUCTION

Murano, Italy

All of these pieces were hand blown by Master Andrea Zilio in Vetreria Anfora.



10/11/2020 (SOLD)

COLOR

Body: Bright Red
Applications: Matte Black

TECHNIQUE

Band application



11/11/2020

COLOR

Body: Bright Red
Applications: Matte Black,
Matte Lavender

TECHNIQUE

Band application



11/11/2020

COLOR

Body: Bright Red
Applications: Matte Black,
Matte Lavender

TECHNIQUE

Ring and band application



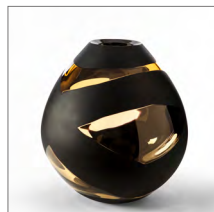
11/11/2020

COLOR

Body: Light Bronze
Applications: Matte Lavender

TECHNIQUE

Band application



11/11/2020

COLOR

Body: Light Bronze
Applications: Matte Black

TECHNIQUE

Band application



12/11/2020

COLOR

Body: Sapphire Blue
Applications: Matte Black, Matte
Milky White, Matte Sapphire Blue

TECHNIQUE

Ring and band application



12/11/2020

COLOR

Body: Sapphire Blue
Applications: Matte Sapphire
Blue, Matte Black

TECHNIQUE

Ring and band application



12/11/2020

COLOR

Body: Topaz Orange
Applications: Matte Black

TECHNIQUE

Band application



13/11/2020

COLOR

Body: Steel Grey
Applications: Matte Cobalt
Blue, Matte Black

TECHNIQUE

Ring and band application



13/11/2020 (SOLD)

COLOR

Body: Steel Grey
Applications: Matte Black

TECHNIQUE

Ring and band application



13/11/2020 (SOLD)

COLOR

Body: Sapphire Blue
Applications: Matte Cobalt
Blue, Matte Milky White

TECHNIQUE

Band application



13/11/2020

COLOR

Body: Steel Grey
Applications: Matte Cobalt Blue

TECHNIQUE

Ring and band application



16/11/2020

COLOR

Body: Steel Grey
Applications: Matte Cobalt Blue

TECHNIQUE

Band application



20/11/2020

COLOR

Body: Steel Grey
Applications: Matte Black,
Matte Cobalt Blue

TECHNIQUE

Band application

AZOICI S

VASES

Limited Edition / 8 + 4 AP

DIMENSIONS

H. 32,5 cm x Ø 33 cm

MATERIAL

Murano hand blown glass

PLACE OF PRODUCTION

Murano, Italy

All of these pieces were hand blown by Master Andrea Zilio in Vetreria Anfora.

MODEL I



MODEL II



MODEL III



MODEL IV



COLOR

Body: Steel Grey

Applications: Matte Black

COLOR

Body: Honey Orange

Applications: Matte Black

COLOR

Body: Rosé

Applications: Matte Warm Grey

COLOR

Body: Salvia

Applications: Matte Warm Grey

COLOR

Body: Sapphire Blue

Applications: Matte Black